

DIN-Signal 2C/2R shroud screwfix 4.30

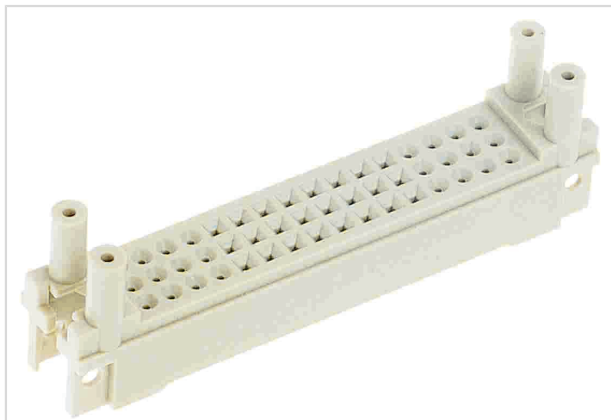


Image is for illustration purposes only. Please refer to product description.

Part number	09 23 000 9969
Specification	DIN-Signal 2C/2R shroud screwfix 4.30
HARTING eCatalogue	https://b2b.harting.com/09230009969

Identification

Category	Accessories
Series	DIN 41612
Type of accessory	Pin shroud
Description of the accessory	for female connectors type 2C for male connectors type 2R
Features	lead-free

Version

Termination length	13 mm
	16.2 mm
	17 mm
Fixing	Screw fixing

Technical characteristics

Isolation group	IIIa ($175 \leq CTI < 400$)
PCB thickness	4.2 mm ± 0.5
	7.4 mm ± 0.5
	8.2 mm ± 0.5

Material properties

Material (accessories)	Thermoplastic
Colour (accessories)	RAL 7032 (pebble grey)
Material flammability class acc. to UL 94	V-0
RoHS	compliant
ELV status	compliant



Pushing Performance
Since 1945

Material properties

China RoHS	e
REACH Annex XVII substances	Not contained
REACH ANNEX XIV substances	Not contained
REACH SVHC substances	Not contained
California Proposition 65 substances	Yes

Specifications and approvals

Railway classification	F1/I2 acc. to NFF 16-101/102
------------------------	------------------------------

Commercial data

Packaging size	100
Net weight	3 g
Country of origin	China
European customs tariff number	85389099
GTIN	5713140041394
eCl@ss	27440292 Connector component (accessories)